



Program Overview:

WILD:

WILD stands for Wilderness Initiatives for Leadership Development. WILD is a one-semester experiential program that incorporates the following courses: Physical Geography 12/Geology, Environmental Science 11, Outdoor Education 12, Career Life Education 12.

WILD prepares students for employment in the outdoor industry. The skills learned in this program are designed to be transferrable to any outdoor-based occupation, allowing the participants to give back to their community of the Yukon. Students will take the initiative and become an integral part of their trip's planning and leadership component. Unlike the other local outdoor education programs, students will plan their year-end expedition as their Capstone project.

The semester will consist of a range of backcountry trips. The winter trips will focus on backcountry snowmobile travel, and the spring trip will focus on extended river travel. The students themselves will plan the final trip. They will be responsible for the following trip logistics; route mapping, trip itinerary, gear list, meal plan, budget, interpretive knowledge, risk management, and trip leadership. The program's focus on taking students out onto the land and providing positive experiences will enable them to become more ecologically literate with their local Yukon environment.

Program Activities

As you may know, Covid greatly impacted our WILD and PCSS trips last spring as we had to move to an online learning platform. Fortunately, our WILD, SASE and the Bison Hunt program at PCSS are running again for this spring semester.

Our outdoor programs at PCSS are focused on protecting and enhancing fish and wildlife habitat through the education of youth in the field. By allowing students to experience the land, they can develop a greater land-based connection, which will lead to a greater desire to protect and preserve the habitat of our Yukon fish and wildlife. Our various school trips have ranged from observing and learning about the salmon spawning on the Takhini River to harvesting and processing a bison sustainably. These learning opportunities occur as "teachable moments" while students are spending time on the land.

What did we use the fund for?

After receiving the YFWET grant, we ordered a new Snowtrekker Outfitter Wall tent and stove for our WILD, SASE and Bison Hunt Mentorship programs. We are currently planning experiences where we will be relying on this tent to help provide a more enjoyable outdoor learning experience.

With the rest of the fund, we purchased 4 sets of binoculars for our programs. This will enhance students' ability to view wildlife.

Upcoming trips where we will be utilizing the wall tent are:

1. ***WILD Braeburn Bison Research Trip:*** February 15-19, 2021. Nine WILD students will be spending five days out on the land examining bison terrain, habitat, and ecosystems Southwest of Braeburn. Students will be base camping along the Dawson Trail and then travelling every day via snowmobile to different bison sights under Yukon's Bison Biologist, Thomas Jung. WILD will use the Snowtrekker Wall tent to warm up in the evenings and dry students' gear each night. The binoculars will be used to search for bison and other wildlife.

Fish and Wildlife Trip Highlights:

- Opportunities to learn from Thomas Jung about Yukon Bison
- Setting up game cameras of wildlife trails to try and document different species in the area
- Learn about tracking animals in the winter
- Exploring Yukon wildlife adaptations for winter survival

2. ***PCSS Bison Hunt Mentorship Program:*** March 1-5, 2021. Fourteen Grade 8-12 students from PCSS will participate in a 5-day bison hunt trip based out of the Braeburn Summer Camp facilities. Students will use the Snowtrekker Wall tent at night for sleeping accommodations. The binoculars will be used to search for bison and other wildlife.

Fish and Wildlife Trip Highlights:

- Opportunities to learn about bison habitat and ecosystems
- Learn about ethical and sustainable hunting practices in the Yukon with Hunter Education Coordinators and teachers.
- Provide students opportunities to spend time on the land to help develop a greater connection to Yukon ecosystems.

3. WILD Avalanche Rescue Training: April 8-9, 2021: WILD students will spend two days in the White Pass taking their Avalanche Skills Technician 1 course. Students will be using the Snowtrekker Wall tent for warming up and drying gear.

Fish and Wildlife Trip Highlights:

- Students will gain a better understanding of how subnivean species can live underneath the snowpack
- Students will also examine how snowpack depth and avalanches can impact animal populations.

4. WILD Lapie River Expedition: May 25-June 4: WILD students will spend 7-10 days refining their whitewater skills on the Lapie River near Ross River. We will be based camping along the South Canol road using our wall tent as a communal warming and drying space. The binoculars will be used to search for wildlife.

Fish and Wildlife Trip Highlights:

- Students will learn about Tintina Trench migration patterns
- Students will learn about Stone and Fannin Sheep
- Students will discuss fall hunting pressure along the Canal road and examine different management strategies and stakeholders within the area.
- Students will conduct simple aquatic surveys to examine aquatic species in Lapie lakes, rivers and surrounding creeks.

Program Adaptations and Variances

Our programs are continually changing and evolving to meet students' needs, accommodate weather, and mitigate risk. Our upcoming trips this semester have altered for various reasons.

1. WILD Braeburn Bison Research Trip vs. Rose Lake Caribou Research Trip.

- a. This year, we decided to run the Braeburn bison trip over the Rose Lake trip as the logistics were much more straightforward as it involved a much shorter snowmobile ride to our base camp. Last year, the Rose Lake trip proved to be challenging due to the extended distance from Fish Lake to Rose Lake and the deep snowpack on the trail. Braeburn offers a much shorter sled ride with multiple day trip options from camp as well as a well-travelled snowmobile trail for students to navigate.

2. *Lapie River Expedition vs. Tatshenshini Rafting Expedition*

- a. Due to Covid and border closures, we were unable to plan and facilitate our year-end expedition on the Tatshenshini River. The alternative option for this year is the Lapie River, where we will base camp and refine our whitewater paddling skills. Spring water levels and river access were strongly considered when determining an appropriate location for a year-end trip.

3. *PCSS Bison Hunt Trip:*

- a. 2020 Post Bison Feast had to be cancelled due to Covid. The meat was dispersed and used by Elijah Smith Elementary School for dry meat and other school activities.
- b. Due to Covid, we have had to adjust our accommodations for our school hunt. Usually, all students and leaders would sleep in wall tents; however, we have had to accommodate Covid spacing for our sleeping quarters. Some students will still use wall tents; however, some will space out and sleep in the cooking quarters.
- c. With Covid still being a prominent concern this year, we will not be having any Elders joining us on our school hunt. We will continue to respectfully integrate Yukon First Nation Ways of knowing and doing into our trip.

PCSS Communications

Enhancement Trust Recognition:

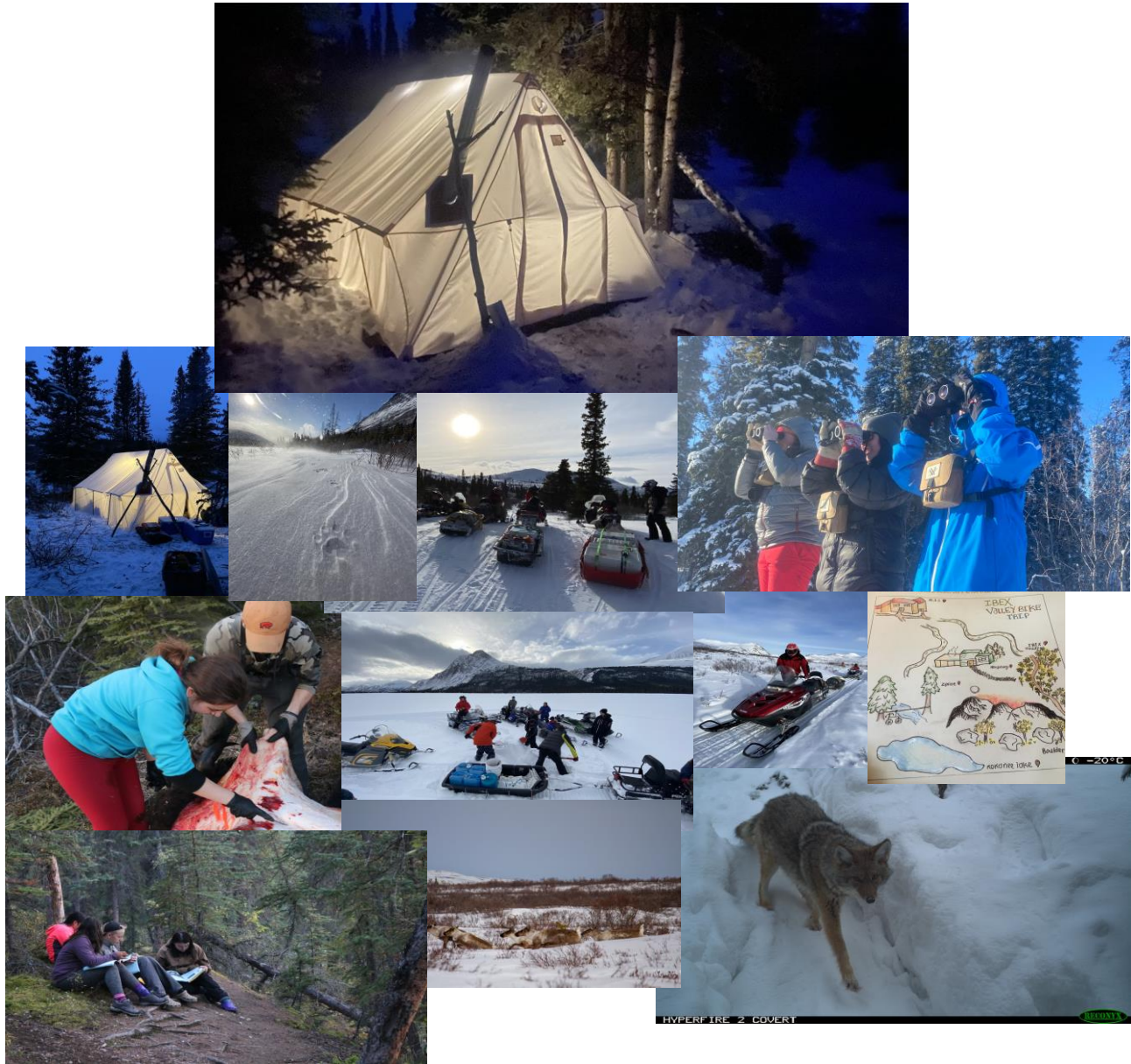
The Yukon Fish and Wildlife Enhancement Trust has been recognized through various forms within our school community. Listed below are the different ways the enhancement trust has been acknowledged.

- Acknowledged at WILD and PCSS Bison Hunt Parent meetings as a supporter of our programs.
- Acknowledged at the annual Department of Education Outdoor Trip Leader Debrief.
- Acknowledged by participating students within these programs.
- Word of mouth acknowledgement with peers and community members.
- Future Acknowledgement in the school newsletter, program social media pages and school website (We have not used the new tent yet at this point, so we have not been able to document its use with our programs)



Project Photos: SASE, WILD, and Bison Hunt

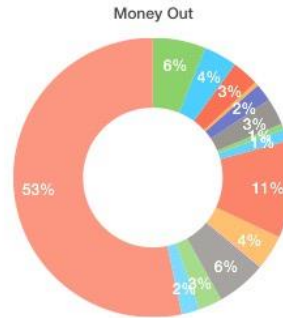
These photos highlight many of the experiences PCSS students have had during our experiential program. From tracking animals to seeing caribou or field dressing bison, our students have developed a greater connection with their environment through experiential on the land learning.



Financial Report

Budget

MONEY IN	
School Budget	\$5,000
Student Fees	\$3,000
PCSS School Council	\$1,000
PCSS Cafeteria (Money for New Elixir Tents)	\$1,540
Hugh and Helen Hinckman Fund (\$2,250)	\$0
Avalanche Rescue (NOT UTILIZED DUE TO COVID)	
Yukon Fish and Wildlife Enhancement Trust	\$5,000
AFD Fuel Donations	\$500
Cabelas Outdoor Grant	\$2,500
TOTAL INCOME	\$18,540



MONEY OUT		ACTUAL EXPENDITURE
WAFAs (Wilderness Advanced First Aid)	\$4,455	\$4,455
Avalanche Safety Training (NOT PURCHASED)	\$2,800	\$0
River Rescue (Rescue Canada) (NOT PURCHASED)	\$2,250	\$0
SAFE Snowmobile Course	\$324	\$324
Snowmobile Fuel/Oil for Winter Trip	\$1,500	\$1,100
Government Truck Rentals (\$150/day)	\$2,250	\$750
Miscellaneous Items: (Propane, stoves, etc.)	\$500	\$500
Gas for Government Bus (NOT PURCHASED)	\$1,000	\$0
Tat/Alsek Dry Bay Flight (Lowest Quote; Tintina Air) (NOT PURCHASED)	\$8,160	\$0
Gear Rental (Tatshenshini Expediting) 12 day gear rental (NOT PURCHASED)	\$3,000	\$0
Park Fees (3 Guides) Glacier Bay National Park (NOT PURCHASED)	\$150	\$0
Park Fees (9 students and 3 guides) \$100/person (NOT PURCHASED)	\$1,200	\$0
Snowtrekker Wall Tent and Stove	\$4,000	\$4,000
MSR Elixir 4 Person Tents x5	\$2,000	\$1,540
NRS PFD's (NOT PURCHASED)	\$1,500	\$0
4 pairs of Vortex Binoculars	\$1,060	\$900
3 Reconyx Trail Cameras	\$2,211	\$2,211
Locks and Accessories for Trail Camera	\$366	\$366
TOTAL EXPENSES	\$38,726	\$16,146

- WAFAs (Wilderness Advanced First Aid)
- Avalanche Safety Training (NOT PURCHASED)
- River Rescue (Rescue Canada) (NOT PURCHASED)
- SAFE Snowmobile Course
- Snowmobile Fuel/Oil for Winter Trip
- Government Truck Rentals (\$150/day)
- Miscellaneous Items: (Propane, stoves, etc.)
- Gas for Government Bus (NOT PURCHASED)
- Tat/Alsek Dry Bay Flight (Lowest Quote; Tintina Air) (NOT PURCHASED)
- Gear Rental (Tatshenshini Expediting) 12 day gear rental (NOT PURCHASED)
- Park Fees (3 Guides) Glacier Bay National Park (NOT PURCHASED)
- Snowtrekker Wall Tent and Stove
- MSR Elixir 4 Person Tents x5
- NRS PFD's (NOT PURCHASED)
- 4 pairs of Vortex Binoculars

MONEY LEFT OVER	
Income minus expenses	-\$20,187

*** Please note that the WILD program receives funding from a variety of contributors. With Covid our predicted budget was quite different than the actual costs in the end.

What did the YFWET get used?

Item	Cost	Comments	Receipts Included
Snowtrekker Outfitter Wall Tent	\$4000 Canadian with Shipping	The receipt for the wall tent is in US funds. With exchange and shipping it was an additional \$1000 CAD	<input type="checkbox"/>
Vortex Binoculars <ul style="list-style-type: none"> • 1x Diamondback @ \$349.99 each • 3x Crossfire @ \$249.99 each 	\$900 Canadian	Hougen's Sports lodge supported our binocular purchase by giving us a discount.	<input type="checkbox"/>
Trail Camera Accessories and trip supplies from Canadian Tire <ul style="list-style-type: none"> • Locks • Waterproof case • Batteries • Wall tent lights 	\$100+	The rest of the fund were used to help purchased locks and a storage container for our wildlife trail cameras	<input type="checkbox"/>



Reconnyx Trail Camera Case, Batteries and Locks



Reconnyx Trail Camera



Vortex Binoculars



Snowtrekker Wall Tent and Stove