

# Teslin Lake Bird Observatory Annual Report 2025



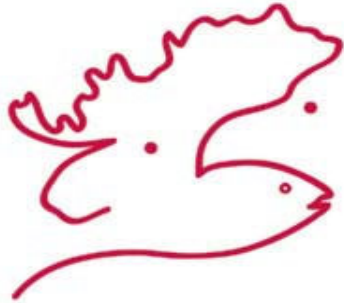
Ben Schonewille  
Society of Yukon Bird Observatories  
March 2026

The 2025 operation of the Teslin Lake Bird Observatory was made possible due to support and financial contributions from the following organizations.



**Environment  
Canada**

**Environnement  
Canada**



**Yukon Fish and Wildlife  
Enhancement Trust**



Cover Photo: TLBOs second Pacific Wren banded on September 1, 2025 (Photo: Jukka Jantunen).

The Teslin Lake Bird Observatory is operated by the **Society of Yukon Bird Observatories** (SOYBO; PO Box 30056, Whitehorse, YT, Y1A 5M2). SOYBO was established in 2010 to serve as an umbrella society to coordinate bird monitoring activities and associated educational programs at the Yukon Bird Observatories field stations. The objectives of SOYBO are: (1) contribute to the conservation of migratory birds in western North America, (2) to help people learn about the natural history and conservation of Yukon avifauna, and, (3) to work with other societies, organizations and individuals with similar objectives. For further information, visit the SOYBO website at [www.yukonbirdobservatories.org](http://www.yukonbirdobservatories.org)

## SUMMARY

During 2015, the Yukon Bird Observatories (Teslin Lake and Albert Creek) were granted full membership status to the Canadian Migration Monitoring Network (CMMN). The Yukon Bird Observatories are the northernmost and the only stations located within the core of Canada's Boreal Forest.

The Teslin Lake Bird Observatory completed its eighteenth consecutive year of fall migration monitoring in 2025. The field station operated for a total of 76 days between July 30 and October 20. The observatory has followed the same operating procedures since standardized migration monitoring began during the fall of 2008.

Crews followed standard methods to mist net, handle, band and record information from captured birds. They banded a total of 1,481 birds of 46 species with 5,155 net hours (28.7 birds/100 net hours). Alder Flycatcher, Slate-colored Junco, Myrtle Warbler, Yellow Warbler and Ruby-crowned Kinglet were the five most common species banded, accounting for over 64 % of all individuals banded.

Visual migration and lake counts were conducted to collect monitoring data for bird species not adequately sampled by mist netting (for example diurnal raptors, loons and grebes). Between August 30 and October 20, personnel spent 117 hours doing visual counts and observed 20,162 individuals (117 birds per hour) with waterfowl and passerines being the most common species group observed.

Noteworthy results from 2025 included:

- The number of birds banded was relatively low compared to past years.
- Alder Flycatcher is typically the most frequently banded species at TLBO and this was once again the case during 2024 with a total of 377 individuals banded.
- One new species (Brown Creeper) was banded during 2025 and no new species were observed.
- A total of 724 raptors were observed on the visual migration counts with the most common species being Northern Harrier.
- The lake counts tallied a total of 93 bird days of shorebirds (6 species), 384 bird-days of loons (3 species), 217 bird days of grebes (2 species) and 945 bird-days of gulls/terns/jaegers (7 species).

## TABLE OF CONTENTS

<b>1.0</b>	<b>INTRODUCTION.....</b>	<b>6</b>
1.1	BACKGROUND .....	6
1.2	GOALS OF THE TESLIN LAKE BIRD OBSERVATORY .....	7
1.3	OBJECTIVES OF THE 2024 SEASON.....	7
1.5	ACKNOWLEDGEMENTS .....	7
<b>2.0</b>	<b>METHODS .....</b>	<b>8</b>
2.1	STUDY SITE .....	8
2.2	GENERAL METHODS.....	8
2.3	MIST NETTING.....	10
2.4	VISUAL MIGRATION WATCH.....	10
2.5	LAKE COUNTS .....	11
2.6	INCIDENTAL OBSERVATIONS .....	11
2.7	MOLT SCORING .....	11
2.8	PUBLIC ENGAGEMENT .....	11
<b>3.0</b>	<b>RESULTS &amp; DISCUSSION .....</b>	<b>12</b>
3.1	STATION OPERATION.....	12
3.2	PATTERNS IN CAPTURES.....	13
3.3	VISUAL MIGRATION COUNTS .....	15
3.4	LAKE COUNTS .....	16
3.5	VISITORS AND VOLUNTEERS .....	17
<b>4.0</b>	<b>CONCLUSION .....</b>	<b>18</b>
	<b>APPENDIX A – SPECIES CHECKLIST.....</b>	<b>19</b>
	<b>APPENDIX B – DAILY SPECIES TOTAL SUMMARY .....</b>	<b>20</b>

## LIST OF FIGURES

Figure 1. Overview of the Teslin Lake Bird Observatory (60.2319 °N, -132.9159 ° W). The numbers and red lines are mist nets, each 12 m long with the exception of net 28 which is 18 m in length. There is a campground bordering the mist netting area on the south side (right hand side of the photo. The red line with the “C” is the non-standard canopy net which was not used during 2023.....	9
Figure 2. Summary of birds banded per day during the fall of 2024. ....	14
Figure 3. Summary of birds banded during the fall from 2008 to 2024. ....	14
Figure 4. Visual counting effort, in hours each day, over the duration of the 2024 season.....	15

## LIST OF TABLES

Table 1. Summary statistics for the 2024 fall season. ....	12
Table 2. Birds banded during the 2024 fall season. ....	13
Table 5. Summary of birds observed on the visual migration counts from 2009 to 2024. ....	16
Table 6. Summary of shorebirds (left), waterbirds (middle) and waterfowl (right) observed on the lake counts during 2024. One bird day represents one individual on one day; two bird days could represent single birds on two days or two birds on the same day. ....	17

## 1.0 Introduction

This report describes methods and results of work done at the Teslin Lake Bird Observatory from July 30 to October 20, 2025, the 18th year of fall operation at this site. No new activities were undertaken at the observatory in 2025.

Previous annual reports and the database of band recoveries can be found on the Society of Yukon Bird Observatories website: [www.yukonbirdobservatories.org](http://www.yukonbirdobservatories.org)

### 1.1 Background

The observatory collects information on birds which is shared through an international bird banding database (Canadian Wildlife Service Bird Banding Office and USGS Bird Banding Laboratory), Society of Yukon Bird Observatories annual station reports, and other publications. During 2015, the Yukon Bird Observatories (Teslin Lake and Albert Creek) were granted full membership status to the Canadian Migration Monitoring Network (CMMN). The CMMN is a nationwide network of 26 member stations from across Canada that collect standardized bird monitoring data and collaborate on research projects. The Yukon Bird Observatories are the northernmost stations and are located within the core of Canada's western Boreal Forest.

Many of the birds banded and observed at Teslin Lake are highly migratory, spending the winter months as far south as Central and South America. In addition to the knowledge gained from band recoveries, the observatory also continues to gather baseline data of birds (and their migration) in the Teslin region and the Yukon as a whole. Due to the large landmass of the territory, and the relatively few bird biologists and advanced birders in the Yukon, there is still a great deal to be learned regarding the bird life of the Yukon. The observatory serves as a highly valuable research and monitoring project to better understand the distribution of the Yukon's bird species, some of which are considered uncommon or rare. Over the long term, the data collected at the observatory will facilitate trend analysis for a number of species. Such information will be valuable for conservation and monitoring of bird populations not only in the Yukon, but North America as a whole. In addition to monitoring bird populations, the observatory collects a substantial amount of data on each bird banded. Information such as age, sex, measurements (wing, tail, etc.) and molt timing continue to add to the knowledge base of such information across North America.

The observatory plays a role in education as a place where the public, volunteers and students can take part in a unique, community-based research and monitoring project. Numerous people visit the observatory on an annual basis and the field station has become a valuable training opportunity for individuals interested in learning about ornithological research and monitoring methods.

## 1.2 Goals of the Teslin Lake Bird Observatory

The goals of the Teslin Lake Bird Observatory are to:

- Gather baseline information on birds and bird migration in the Teslin area.
- Collect data to facilitate the long-term monitoring (*i.e.* trend analysis) of birds in the southern Yukon.
- Conduct and participate in specific studies such as feather collecting for stable isotope analysis and color banding.
- Provide a setting for the public including school groups to learn about birds and bird migration.
- Provide employment and training opportunities for students and volunteers.
- Provide a unique tourist attraction for the community of Teslin.

## 1.3 Objectives of the 2025 Season

The objectives of the 2025 field season at the Teslin Lake Bird Observatory were to:

- Continue the fall monitoring work using previously established protocols,
- Collect an additional year of bird monitoring data to be used for future trend analysis,
- Further refine the techniques to capture and band owls,
- Collect information on the molt timing of adult passerines banded, and,
- Compare 2025 bird migration results to the previous 16 years of similarly collected data.

## 1.5 Acknowledgements

The 2025 operation of the Teslin Lake Bird Observatory would not have been possible without financial assistance from the following organizations/groups: Environment and Climate Change Canada (Canadian Wildlife Service), Yukon Fish & Wildlife Enhancement Trust Fund, Yukon Bird Club, Teslin Renewable Resources Council, and EDI Environmental Dynamics Inc. Yukon Parks provided use of a space in the Teslin Lake campground for an extended period of time to allow our long-term volunteers a place to camp for the duration of the 2024 season. Jukka Jantunen's excellent bird identification skills ensured high quality data collection, particularly during the visual migration counts which are challenging to complete with a high level of accuracy and consistency. Jukka has been the Bander in Charge at TLBO since full scale fall operation of the observatory began during 2008. Ted Murphy-Kelly assisted with field operations and observatory logistics including scheduling of volunteers.

We appreciate the help from the following volunteers without whom the operation of the observatory would not have been possible:

- more than 30 days – Alissa Kazi;
- 10 to 20 days – Ted Murphy-Kelly, Julie Bauer;
- 5 to 10 days – Alex Oberg;
- Less than 5 days – Scott Cavašin, Kate Kennedy, Brenna Kelly, Cora Kelly, Todd Mahon, Lloyd Freese, Avery Bartels, Boris Dobrowolsy, Cameron Eckert, Aaron Rich, Hollie Murphy-Kelly, Andrea Altherr, Pam Sinclair, Matt Kitchen, Kristina Schmidt and Tracy Allard.

## 2.0 Methods

### 2.1 Study Site

Teslin Lake is a 125 km long by 2-5 km wide lake in the south-central Yukon near the border with British Columbia. The standard count area is located near the outlet of 10 Mile Creek at the site known locally as Ten-mile Point; this area is located on the east shore within the north third of the lake. The lake falls in a natural trench that runs to the northwest and serves as a migration route for many bird species coming from breeding areas to the north in Yukon and Alaska. The site falls within the Yukon Southern Lakes Ecoregion (Boreal Cordillera Ecozone)<sup>1</sup>.

During the 2005 season, the observatory was located on the shoreline of Nisutlin Bay; however, issues associated with land tenure of the site led to a new site being used since 2006. The current site is located on 10 Mile point approximately 10 km northwest of the community of Teslin. The observatory is located in the riparian zone between Teslin Lake and the Yukon Government Campground (Figure 1). The vegetation within the site is a mixture featuring a transition from bare gravel lakeshore to shrubs and larger deciduous trees. Also within the site is a small wetland area connected to Teslin Lake which has seasonally fluctuating water levels. The area is dominated by willow (*Salix* spp.) and alder (*Alnus* spp.) with some mature white spruce (*Picea glauca*), trembling aspen (*Populus tremuloides*) and balsam poplar (*P. balsamifera*) scattered throughout.

### 2.2 General Methods

The methods for the operation of the bird observatory follow the Teslin Lake Bird Observatory Field Protocol and Manual<sup>2</sup>. A summary of the field protocol is described in the following sections; however, for a detailed description refer to the publications page of the Society of Yukon Bird Observatories website ([www.yukonbirdobservatories.org](http://www.yukonbirdobservatories.org)).

All monitoring activities at the observatory can be separated into standardized and non-standardized methods. To facilitate long-term analysis of the observatory's data, the standardized data is collected in the same format year after year. Non-standardized activities may include species-specific mist nets within the count area or the collection of banding/observation data outside of the standard count period.

---

<sup>1</sup> Smith, C.A.S., Meikle, J.C., and Roots, C.F. (editors), 2004. Ecoregions of the Yukon Territory: Biophysical properties of Yukon landscapes. Agriculture and Agri-Food Canada, PARC Technical Bulletin No. 04-01, Summerland, British Columbia, 313 p.

<sup>2</sup> Schonewille, B. 2011. Teslin Lake Bird Observatory (TLBO) Field Protocol (version 2). Society of Yukon Bird Observatories.



**Figure 1.** Overview of the Teslin Lake Bird Observatory (60.2319 °N, -132.9159 °W). The numbers and red lines are mist nets, each 12 m long with the exception of net 28 which is 18 m in length. There is a campground bordering the mist netting area on the south side (right hand side of the photo). The red line with the “C” is the non-standard canopy net which was not used during 2023.

For every species observed, estimated totals are calculated for each day of operation using the following categories:

- Band: new birds banded.
- Recaptures: previously banded birds, not included if recaptured on the original day of banding.
- Visual Migrants
  - Migration Watch: birds observed in obvious migration flight, only includes individuals observed during the visual migration counts.
  - Incidental: birds observed in obvious migration flight, only includes individuals observed incidentally (i.e., not during the visual migration counts).
- Observed: birds observed, but not in obvious migration flight; includes incidental observations and the lake counts.

Using the categories outlined above, the Bander-In-Charge estimates the total number of individuals observed within/passing through the count area within the standard count period on a daily basis. Using only the standard count period data, this number represents the Daily Estimated Total (DET) and when the non-standard data is included, this number represents the Daily Species Total (DST). The DET data will provide the basis for future trend analysis of the data collected at the observatory.

During 2025, the operation of the Teslin Lake Bird Observatory was led by the Primary Bander in Charge Jukka Jantunen. Jukka was responsible for overseeing all activities at the observatory including the capture/banding of birds, supervising volunteers, conducting the visual migration watches, recording the daily estimated total data and entering the data. Ted Murphy-Kelly was Co-Station Manager which included station logistics, staffing and filling in for the primary bander. Ben Schonewille was also a Co-Station Manager and looked after data analysis and the preparation of this report. Board members of the Society of Yukon Bird Observatories helped administer the Yukon Bird Observatories.

Site infrastructure is minimal at this site. A narrow trail connects the banding table to the nets and to the station access point via the Yukon Government campground. There is no covered blind from which to watch birds and nets are removed at the end of the season and are stored away from the site. The site is partially below the high-water mark of Teslin Lake and on land owned by the Yukon Government as a component of the campground reserve. To date this level of activity has not required any permitting aside from the federal and territorial permits required for the capture and banding of birds, and a permit from Yukon Parks allowing extended use of a campground site.

### **2.3 Mist Netting**

The primary method of monitoring the movement of birds through the study site is the use of mist nets for the purpose of capturing and banding birds. The observatory operates with 22 standard mist nets and one non-standard mist net (Figure 1). No non-standard nets were used in 2024; note that in previous years a trial canopy net (net ID = C on Figure 1) was used. All nets are 30 mm mesh, 4 panels tall, and 12 m in length, with the exception of net 28 which is 18 m in length. The standard mist netting effort begins at official sunrise and continues for 6 hours. The full mist netting effort is achieved only on days when adequate personnel are present onsite and weather conditions are favourable. If full effort is not possible, then the number of nets operated is reduced rather than reducing the duration of effort.

### **2.4 Visual Migration Watch**

Visual migration counts are conducted on all days of operation to supplement the banding data. All watches are conducted from the observation site (Figure 1) and involve scanning the sky with binoculars and a spotting scope to observe and count all birds flying past the site. The protocol states that as a minimum, 10 minutes of watch shall be conducted per hour (6 hours) followed by a 1 hour watch at the end of the mist netting period. On many days of operation the visual count effort is substantially more. The visual migration counts aim to monitor diurnal migrating species such as raptors and large waterfowl. Most nocturnal migrants such as most warblers, sparrows and thrush are well-monitored by mist netting. However, for some species which are not adequately covered by mist netting, the visual counts allow for monitoring data to be collected for these species.

Whenever possible, additional information on age, sex and/or color morph is collected for the birds observed during the visual migration watches. Particularly for raptors, the information can supplement the data collected by providing information on the proportion of younger birds.

## **2.5 Lake Counts**

Completed in conjunction with the visual migration counts, a thorough lake count is performed daily from the observation site with a spotting scope to enumerate all birds on or over Teslin Lake which are visible from the predetermined viewing location. These counts target a wide range of species including; loons, grebes, some waterfowl, gulls and some species of shorebirds.

## **2.6 Incidental Observations**

Incidental observations are collected on a continuous basis at the observatory. For example, birds observed on the ground or in the vegetation while conducting mist net checks would be considered incidental observations. Birds in obvious directed migration but not during standard visual migration watches, e.g. flying overhead in flocks or raptors passing overhead, were recorded as ‘incidental migrants’.

## **2.7 Molt Scoring**

As supplementary information, in order to assess the timing of molt, we rate the growth of new flight feathers in adult birds that are banded. Although information on the prebasic molt (amount of juvenile plumage remaining) is collected for hatch year birds, a particular emphasis was placed upon collecting wing molt scores for molting adult individuals because this tells us about the timing of the molt as it relates to the timing of migration in various species of adult birds.

Wing molt score is achieved by assigning each individual wing flight feather a score from zero (old feather remaining) to five (new feather fully grown) and adding them together. Birds that have not yet started to molt have a cumulative score of zero whereas individuals which have completed molt would have a score of 75 (based on 9 primary flight feathers) or 80 (10 primary flight feathers).

## **2.8 Public Engagement**

To attract members of the public to the observatory, we put up posters at various common buildings in Teslin including the Nisutlin Trading Post, Yukon Motel, Teslin Tlingit Council Administration Office and Post Office. We also advertised the observation through digital media including the Yukon Bird Observatories blog, Facebook page and website. Interested individuals could also find articles in the the Yukon Government Wildlife viewing program calendars and media advertising.

## 3.0 Results & Discussion

### 3.1 Station Operation

The 2025 fall season included a total of 76 field days between July 30 and October 20. Standardized mist netting occurred on 55 days between July 30 and September 30 and no non-standard mist netting occurred.

A total of 1,481 birds of 46 species were banded and 125 species were observed (Table 1, Table 2). The all-time total number of birds banded at Teslin Lake Bird Observatory is now 55,898 birds of 101 species and 211 species have been observed (Appendix A). One new species was banded during 2025 with single Brown Creepers banded on August 16 and September 23.

**Table 1.** Summary statistics for the 2025 fall season.

Week	Date	Days Operated <sup>1</sup>	Birds Banded				Visual Counts	
			#	Species	Net Hours	#/100 Net Hours	# of Visual Migrants <sup>2</sup>	Counting Hours
1	30 Jul – 5 Aug	6	85	20	462	18.4	134	0.0
2	6 – 12 Aug	4	107	19	321	33.3	118	0.0
3	13 – 19 Aug	5	196	22	413	47.5	796	0.0
4	20 – 26 Aug	7	445	26	660	67.4	514	0.0
5	27 Aug – 2 Sep	7	184	25	750	24.5	370	2.1
6	3 – 9 Sep	7	209	25	805	26.0	386	0.0
7	10 – 16 Sep	7	70	15	589	11.9	676	5.2
8	17 – 23 Sep	6	83	15	550	15.1	3,470	11.9
9	24 – 30 Sep	7	93	15	605	15.4	11,150	27.5
10	1-7 Oct	7	-	-	-	-	1,794	19.2
11	8 – 14 Oct	7	-	-	-	-	2,463	28.5
12	15 – 20 Oct	6	-	-	-	-	2,152	22.7
ALL	30 Jul – 20 Oct	76	1,481	46	5,155	28.7	24,023	

<sup>1</sup> Requires a minimum of 3 hours onsite with full estimated totals recorded (does not require mist netting if weather conditions are adverse).

<sup>2</sup> Note this total includes visual migrants counted during the visual counts and incidental visual migrants observed.

**Table 2.** Birds banded during the 2025 fall season.

Common Name	Scientific Name	# Banded	# Banded / 100 Net Hrs
Sharp-shinned Hawk	<i>Accipiter striatus</i>	6	0.12
Solitary Sandpiper	<i>Tringa solitaria</i>	3	0.06
Belted Kingfisher	<i>Megaceryle alcyon</i>	6	0.12
Downy Woodpecker	<i>Dryobates pubescens</i>	2	0.04
Western Wood-Pewee	<i>Contopus sordidulus</i>	2	0.04
Yellow-bellied Flycatcher	<i>Empidonax flaviventris</i>	3	0.06
Alder Flycatcher	<i>Empidonax alnorum</i>	377	7.31
Hammond's Flycatcher	<i>Empidonax hammondii</i>	3	0.06
Warbling Vireo	<i>Vireo gilvus</i>	4	0.08
Black-capped Chickadee	<i>Poecile atricapillus</i>	40	0.78
Boreal Chickadee	<i>Poecile hudsonicus</i>	28	0.54
Red-breasted Nuthatch	<i>Sitta candensis</i>	6	0.12
Brown Creeper	<i>Certhia americana</i>	2	0.04
Pacific Wren	<i>Troglodytes pacificus</i>	1	0.02
Golden-crowned Kinglet	<i>Regulus satrapa</i>	4	0.08
Ruby-crowned Kinglet	<i>Regulus calendula</i>	93	1.80
Gray-cheeked Thrush	<i>Catharus minimus</i>	3	0.06
Swainson's Thrush	<i>Catharus ustulatus</i>	11	0.21
Hermit Thrush	<i>Catharus guttatus</i>	1	0.02
American Robin	<i>Turdus migratorius</i>	3	0.06
Varied Thrush	<i>Ixoreus naevius</i>	2	0.04
Tennessee Warbler	<i>Leothlypis peregrina</i>	3	0.06
Northern Waterthrush	<i>Parus noveboracensis</i>	36	0.70
Orange-crowned Warbler	<i>Vermivora celata</i>	40	0.78
Common Yellowthroat	<i>Geothlypis trichas</i>	63	1.22
American Redstart	<i>Setophaga ruticilla</i>	15	0.29
Yellow Warbler	<i>Setophaga petechia</i>	103	2.00
Magnolia Warbler	<i>Setophaga magnolia</i>	1	0.02
Blackpoll Warbler	<i>Setophaga striata</i>	49	0.95
Myrtle Warbler	<i>Setophaga coronata</i>	163	3.16
Townsend's Warbler	<i>Setophaga townsendi</i>	5	0.10
Wilson's Warbler	<i>Cardellina pusilla</i>	90	1.75
American Tree Sparrow	<i>Spizella arborea</i>	11	0.21
Chipping Sparrow	<i>Spizella passerina</i>	11	0.21
Savannah Sparrow	<i>Passerculus sandwichensis</i>	9	0.17
Fox Sparrow	<i>Passerella iliaca</i>	15	0.29
Lincoln's Sparrow	<i>Melospiza lincolni</i>	14	0.27
White-crowned Sparrow	<i>Zonotrichia leucophrys</i>	16	0.31
Slate-colored Junco	<i>Junco hyemalis</i>	214	4.15
Rusty Blackbird	<i>Euphagus carolinus</i>	12	0.23
Purple Finch	<i>Haemorhous purpureus</i>	1	0.02
White-winged Crossbill	<i>Loxia leucoptera</i>	3	0.06
Common Redpoll	<i>Acanthis flammea</i>	3	0.06
<b>TOTAL</b>		<b>1,481</b>	<b>28.73</b>

### 3.2 Patterns in Captures

Banding totals were relatively low throughout the 2025 season with no days with over 100 birds banded (Figure 2). The general peak in captures occurred during the last week of August which is typical at the site. Thirty percent of the total birds banded during 2025 occurred over a 6 day period from August 20 to 25.

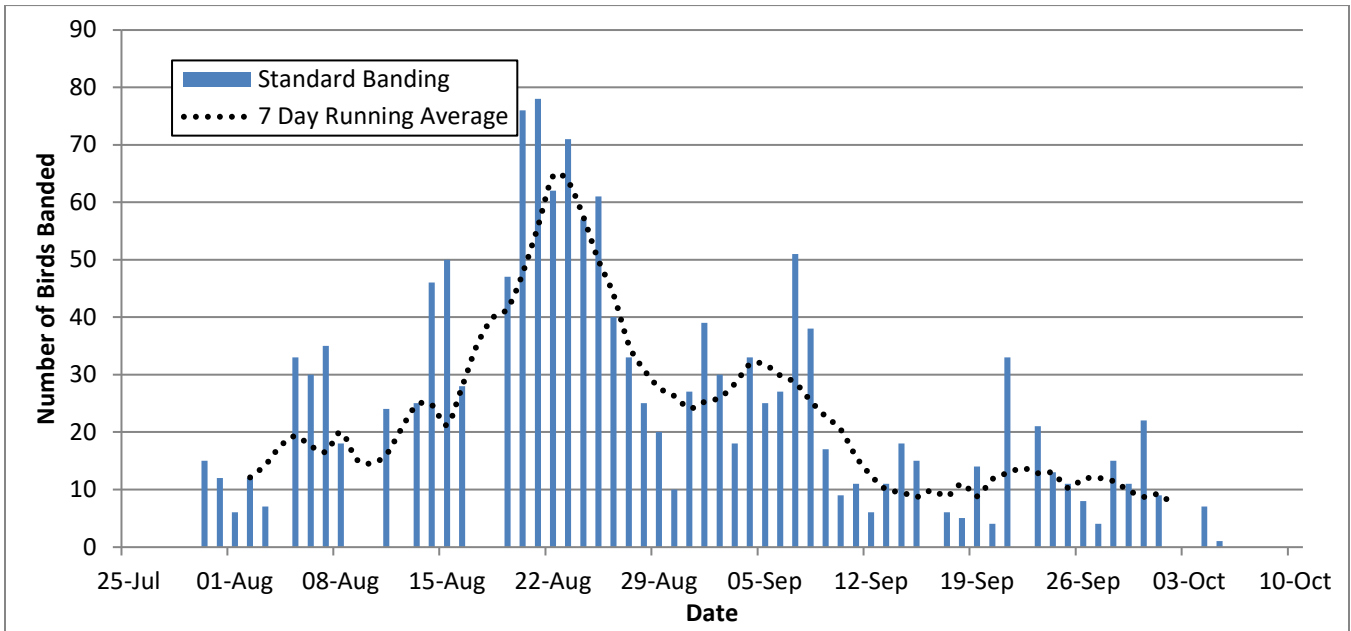


Figure 2. Summary of birds banded per day during the fall of 2025.

The number of birds banded during 2025 (1,481) was the second lowest to date since the observatory began operations during 2008; the lowest total to date was 1,156 during 2022 (Figure 3). When birds per net hour are taken into consideration, the 2025 value of 28.7 birds per 100 net hours was not the lowest but below the long-term average of 46.7 birds per 100 net hours.

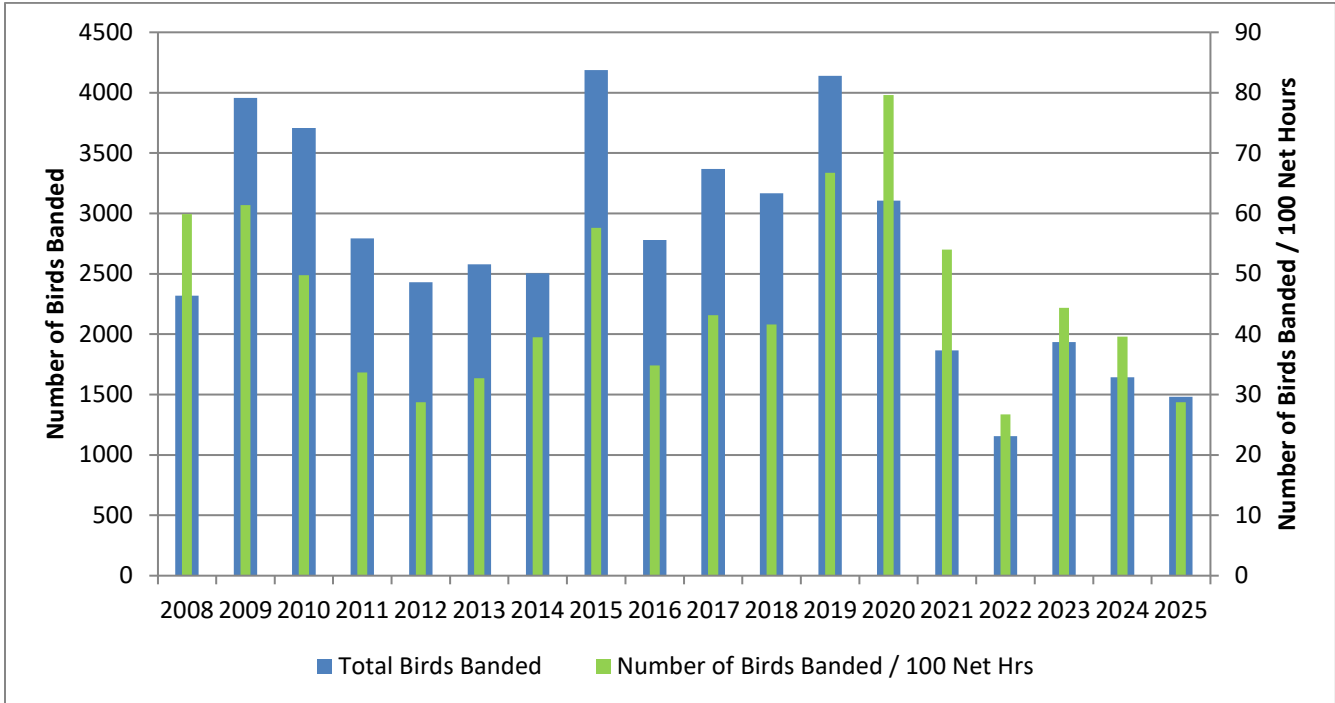
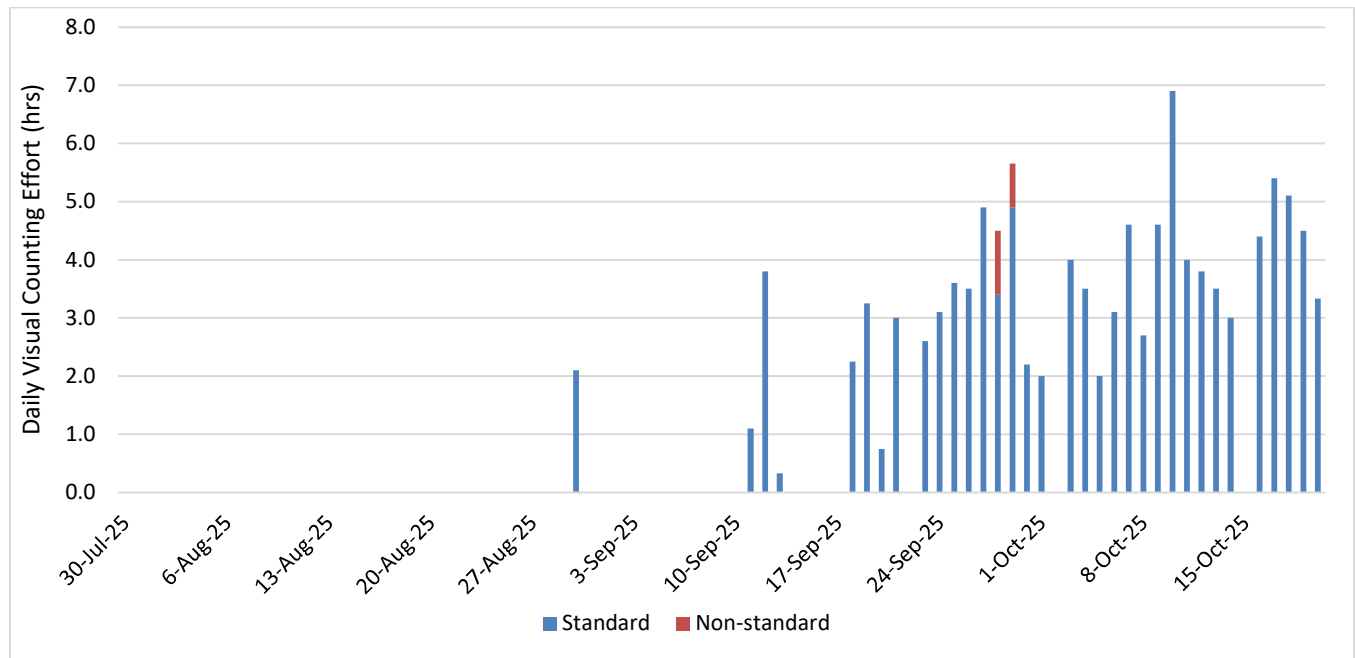


Figure 3. Summary of birds banded during the fall from 2008 to 2025.

### 3.3 Visual Migration Counts

The visual migration counts provide a method of estimating relative numbers of individuals in migration that would not be caught in mist nets. The counts are especially useful in observing raptors in migration and also serve as a method for monitoring waterbirds, waterfowl and some species of passerines. Note that birds seen during the migration counts which are not in active migration flight are not included in this section. Birds “in active migration flight” typically show a directed flight over the count area and do not appear to linger within the count area. During the fall 2025 season, visual migration counts (standard & nonstandard) were conducted for 117 hours (Figure 4).



**Figure 4.** Visual counting effort, in hours each day, over the duration of the 2025 season.

A total of 20,162 birds were observed during the 2025 visual migration counts with waterfowl and passerines accounting for the largest proportion of the birds observed (Table 3). The number of individuals counted were far below average for all species groups.

**Table 3.** Summary of birds observed on the visual migration counts from 2009 to 2025.

Year	Total Birds Observed					TOTAL BIRDS OBSERVED / HR	Visual Counting Effort (hrs)
	Waterbirds & shorebirds	Waterfowl	Raptors	Passerines	ALL SPECIES		
2009	4,927	8,219	1,612	11,000	25,758	201	128.1
2010	3,491	22,258	1,710	16,277	43,736	188	232.4
2011	1,072	31,548	3,680	37,951	74,251	218	340.6
2012	1,583	35,044	1,977	21,408	60,012	169	354.8
2013	2,166	7,852	2,466	28,839	41,323	147	280.9
2014	721	28,556	2,300	23,397	54,974	197	279.0
2015	3,878	22,560	4,211	11,797	42,446	218	194.6
2016	1,043	14,885	1,946	20,182	38,056	204	186.7
2017	436	9,497	980	13,626	24,539	87	235.6
2018	1,103	11,689	1,268	2,386	16,443	138	119.5
2019	1,690	30,544	2,095	15,705	50,034	248	201.6
2020	767	21,238	1,253	9,731	32,989	74	448.2
2021	593	17,588	1,865	8,189	28,235	160	176.3
2022	238	7,384	439	7,865	15,926	128	124.5
2023	1,293	20,881	3,731	13,089	38,994	374	104.1
2024	128	5,986	778	5,096	11,988	113	105.4
2025	203	9,957	724	9,278	20,162	172	117.0
<b>2009-2024 Average</b>	1,571	18,483	2,019	15,409	37,482	179	219.5

### 3.4 Lake Counts

The lake counts provide monitoring data for various species of shorebirds, loons, grebes, waterfowl, and gulls/terns/jaegers. Six shorebird species were observed during the lake counts with all species observed in relatively low numbers with the exception of Spotted Sandpiper. The majority of loons and grebes counted at the observatory are observed on the lake counts and this was once again the case during 2025 with a total of 384 loons and 217 grebes (Table 4). Geese and swans were observed in very low numbers during the lake counts; these species are typically observed flying over the site only (i.e. are visual migrants). However, for some duck species (scoters and mergansers), the lake counts record data to supplement the visual migration counts (Table 6). Only small numbers of dabbling and diving ducks are seen mostly due to scarcity of suitable stopover and feeding habitats near the observatory. As a group, gulls, terns and jaegers are well-monitored through the use of the lake counts; species of this group are the most commonly recorded birds using this method. A total of 945 gulls/terns of 7 species were observed on the 2025 lake counts the most notable of which was a Black-legged Kittiwake observed on October 17, 2025.

**Table 4.** Summary of shorebirds (left), waterbirds (middle) and waterfowl (right) observed on the lake counts during 2025. One bird day represents one individual on one day; two bird days could represent single birds on two days or two birds on the same day.

Species	Total # of Bird Days	Species	Total # of Bird Days	Species	Total # of Bird Days
Least Sandpiper	1	Pacific Loon	68	Canada Goose	244
Spotted Sandpiper	59	Common Loon	246	Greater White-fronted Goose	62
Solitary Sandpiper	11	Red-throated Loon	68	Trumpeter Swan	2
Lesser Yellowlegs	1	<i>Unidentified Loon</i>	2	<i>Unidentified Swan</i>	10
Wilson's Snipe	11	Red-necked Grebe	199	Mallard	50
Red-necked Phalarope	9	Horned Grebe	18	Green-winged Teal	14
<i>Unidentified Shorebird</i>	1	Short-billed Gull	121	Northern Pintail	2
		Herring Gull	679	Northern Shoveler	2
		Thayer's Gull	50	American Wigeon	9
		Sabine's Gull	13	Surf Scoter	62
		Bonaparte's Gull	47	White-winged Scoter	1
		Black-legged Kittiwake	1	Lesser Scaup	53
		Arctic Tern	7	Ring-necked Duck	10
		<i>Unidentified Gull</i>	27	Common Goldeneye	22
				Barrow's Goldeneye	3
				Harlequin Duck	1
				Common Merganser	1385
				<i>Unidentified Duck</i>	21
<b>TOTAL</b>	<b>93</b>	<b>TOTAL</b>	<b>1,546</b>	<b>TOTAL</b>	<b>1,953</b>

### 3.5 Visitors and Volunteers

Visitors and volunteers are normally a large component of TLBO's operation and once again during 2025 we were still able to attract local volunteers to assist with the observatory's operation. A total of 557 volunteer hours were tallied during the fall of 2025. The observatory had a total of 69 visitors during 2025 summing to a total of 152 visitor hours.

## 4.0 Conclusion

The results from the operation of the Teslin Lake Bird Observatory in 2025 have continued to add to the knowledge of numerous aspects of bird biology in the Yukon, including: species distribution, migration timing and productivity. The location of the study site has proven to be effective for monitoring songbird migration. The primary reason for this is the close proximity of the site to Teslin Lake. As the lake is a very large body of water which migrating landbirds are hesitant to cross, many birds concentrate along the lakeshore and pass directly through and over the study site. On numerous occasions, flocks of migrating birds have been observed moving along the lakeshore and thus have yielded some very impressive banding and observation totals at the observatory.

Following eighteen years of fall migration monitoring at the observatory, the ability to monitor songbirds has been well demonstrated by the large numbers of migrants observed and banded on an annual basis. The results gathered this season also confirm the previous assumption that few birds stopover at the study site for extended periods of time. The majority of birds simply pass through the site while in migration and this is supported by the low proportion of band repeats within each season.

The visual migration and lake counts increase the number of bird species which may be monitored at the observatory and are now a key component of the observatory's activities. Together they serve to collect monitoring data for species not banded (or banded only in low numbers) including: waterfowl, loons/grebes, gulls/terns, raptors and some species of passerines, particularly American Robin, Varied Thrush, American Pipit, Rusty Blackbird, Common Redpoll and Pine Siskin. The raptors are a primary focus of these counts as these species are readily observed and identified from a distance. The ability to collect data on ages and color morphs of these species make this data even more valuable.

Over the long term, the data collected at the observatory will be used to refine species trends first prepared during 2022 to determine the status on bird populations. Given the location of the observatory, the birds counted at the site are known to originate in the Yukon and Alaska. Species trend data from this relatively small catchment area will be useful when used in combination with more southerly bird observatories which monitor birds from a much larger catchment area.

## **Appendix A – Species Checklist**

**Table A1.** Birds banded and observed (✓) at Teslin Lake Bird Observatory from 2008 to 2024. Note that observations were not collected during the fall of 2005, 2006 and 2007; observatory was located at a different location on Nisutlin Bay during 2005.

SPECIES	2005		2006		2007		2008		2009	2010	2011	2012	2013	2014	2015	2016	2017	2018	2019	2020	2021	2022	2023	2024	2025	SPRING TOTAL	FALL TOTAL	ALL TIME TOTAL
	Spring	Fall	Spring	Fall	Spring	Fall	Spring	Fall	Fall	Fall	Fall	Fall	Fall	Fall	Fall	Fall	Fall	Fall	Fall	Fall	Fall	Fall	Fall	Fall	Fall			
Bean Goose										✓																-	-	-
Greater White-fronted Goose	✓		✓				✓	✓	✓	✓	✓	✓	✓	✓	✓	✓	✓	✓	✓	✓	✓	✓	✓	✓	✓	-	-	-
Snow Goose					✓		✓	✓		✓	✓	✓	✓	✓	✓	✓	✓	✓	✓	✓	✓	✓	✓	✓	✓	-	-	-
Cackling Goose												✓							✓		✓					-	-	-
Canada Goose	✓		✓		✓		✓	✓	✓	✓	✓	✓	✓	✓	✓	✓	✓	✓	✓	✓	✓	✓	✓	✓	✓	-	-	-
Trumpeter Swan	✓		✓		✓		✓		✓	✓	✓	✓	✓	✓	✓	✓	✓	✓	✓	✓	✓	✓	✓	✓	✓	-	-	-
Tundra Swan			✓		✓		✓	✓	✓	✓	✓	✓	✓	✓	✓	✓	✓	✓	✓	✓	✓	✓	✓	✓	✓	-	-	-
Bewick’s Tundra Swan										✓	✓															-	-	-
Gadwall	✓						✓								✓						✓					-	-	-
American Wigeon	✓		✓				✓	✓	✓	✓	✓	✓	✓	✓	✓	✓	✓	✓	✓	✓	✓	✓	✓	✓	✓	-	-	-
Mallard	✓		✓		✓		✓	✓	✓	✓	✓	✓	✓	✓	✓	✓	✓	✓	✓	✓	✓	✓	✓	✓	✓	-	-	-
Blue-winged Teal							✓																	✓	✓	-	-	-
Northern Shoveler	✓						✓	✓	✓	✓	✓	✓	✓	✓	✓	✓	✓	✓	✓	✓	✓	✓	✓	✓	✓	-	-	-
Northern Pintail	✓				✓		✓	✓	✓	✓	✓	✓	✓	✓	✓	✓	✓	✓	✓	✓	✓	✓	✓	✓	✓	-	-	-
American Green-winged Teal	✓		✓					✓	✓	✓	✓	✓	✓	✓	✓	✓	✓		✓	✓	✓	✓	✓	✓	✓	-	-	-
Canvasback								✓	✓	✓	✓	✓	✓	✓	✓	✓	✓	✓	✓	✓	✓	✓	✓	✓	✓	-	-	-
Redhead									✓	✓				✓	✓						✓					-	-	-
Ring-necked Duck	✓						✓	✓		✓	✓	✓	✓	✓	✓	✓	✓	✓	✓	✓	✓	✓	✓	✓	✓	-	-	-
Greater Scaup								✓	✓	✓	✓	✓	✓	✓	✓	✓	✓	✓	✓	✓	✓	✓	✓	✓	✓	-	-	-
Lesser Scaup							✓	✓	✓	✓	✓	✓	✓	✓	✓	✓	✓	✓	✓	✓	✓	✓	✓	✓	✓	-	-	-
Harlequin Duck							✓	✓		✓	✓	✓	✓	✓		✓			✓	✓	✓	✓	✓	✓	✓	-	-	-
Surf Scoter	✓						✓	✓	✓	✓	✓	✓	✓	✓	✓	✓	✓	✓	✓	✓	✓	✓	✓	✓	✓	-	-	-
White-winged Scoter	✓							✓	✓	✓	✓	✓	✓	✓	✓	✓	✓	✓	✓	✓	✓	✓	✓	✓	✓	-	-	-
Long-tailed Duck							✓			✓	✓	✓	✓	✓	✓	✓	✓		✓	✓	✓	✓	✓	✓	✓	-	-	-
Bufflehead	✓				✓					✓	✓	✓	✓	✓		✓	✓	✓	✓	✓		✓	✓	✓	✓	-	-	-
Common Goldeneye	✓		✓		✓			✓	✓	✓	✓	✓	✓	✓	✓	✓	✓	✓	✓	✓	✓	✓	✓	✓	✓	-	-	-
Barrow’s Goldeneye							✓		✓	✓	✓		✓	✓	✓	✓	✓	✓		✓	✓	✓	✓	✓	✓	-	-	-
Hooded Merganser									✓	✓		✓				✓										-	-	-
Common Merganser	✓		✓		✓		✓	✓	✓	✓	✓	✓	✓	✓	✓	✓	✓	✓	✓	✓	✓	✓	✓	✓	✓	-	-	-
Red-breasted Merganser	✓		✓		✓		✓	✓	✓	✓	✓	✓	✓	✓	✓	✓	✓	✓	✓	✓	✓	✓	✓	✓	✓	-	-	-
Ruffed Grouse	✓		✓		✓		✓	✓	✓	✓	✓	✓	✓	✓	✓	✓	✓	✓	✓	✓	✓	✓		✓	✓	-	-	-
Spruce Grouse	✓						✓		✓	✓	✓	✓	✓	✓	✓	✓	✓			✓	✓			✓	✓	-	-	-
Red-throated Loon	✓						✓	✓	✓	✓	✓	✓	✓	✓	✓	✓	✓	✓	✓	✓	✓	✓	✓	✓	✓	-	-	-
Pacific Loon								✓	✓	✓	✓	✓	✓	✓	✓	✓	✓	✓	✓	✓	✓	✓	✓	✓	✓	-	-	-
Common Loon	✓		✓		✓		✓	✓	✓	✓	✓	✓	✓	✓	✓	✓	✓	✓	✓	✓	✓	✓	✓	✓	✓	-	-	-
Yellow-billed Loon										✓	✓	✓		✓		✓	✓					✓	✓		✓	-	-	-
Horned Grebe								✓	✓	✓	✓	✓	✓	✓	✓	✓	✓	✓	✓	✓	✓	✓	✓	✓	✓	-	-	-
Red-necked Grebe	✓		✓					✓	✓	✓	✓	✓	✓	✓	✓	✓	✓	✓	✓	✓	✓	✓	✓	✓	✓	-	-	-

SPECIES	2005		2006		2007		2008		2009	2010	2011	2012	2013	2014	2015	2016	2017	2018	2019	2020	2021	2022	2023	2024	2025	SPRING TOTAL	FALL TOTAL	ALL TIME TOTAL
	Spring	Fall	Spring	Fall	Spring	Fall	Spring	Fall	Fall	Fall	Fall	Fall	Fall	Fall	Fall	Fall	Fall	Fall	Fall	Fall	Fall	Fall	Fall	Fall	Fall			
Western Grebe											✓					✓							✓			-	-	-
Double-crested Cormorant							✓																			-	-	-
Great Blue Heron																✓										-	-	-
Turkey Vulture														✓												-	-	-
Osprey	✓		✓		✓		✓	✓	✓	✓	✓	✓	✓	✓	✓	✓	✓	✓	✓	✓	✓	✓	✓	✓	✓	-	-	-
Golden Eagle							✓	✓	✓	✓	✓	✓	✓	✓	✓		✓	✓	✓	✓	✓	✓	✓	✓	✓	-	-	-
Northern Harrier	✓		✓		✓		1	✓	✓	✓	✓	✓	✓	✓	✓	✓	✓	1	✓	✓	✓	✓	2	✓	✓	1	3	4
Sharp Shinned hawk	✓		✓		2		1	10	23	14	7	13	6	14	25	10	12	10	7	3	11	9	12	4	6	3	196	199
Northern Goshawk							✓	✓	✓	✓	✓	✓	✓	✓	✓	✓	✓	✓	✓	✓	✓	✓	✓	✓	✓	-	-	-
Bald Eagle	✓		✓		✓		✓	✓	✓	✓	✓	✓	✓	✓	✓	✓	✓	✓	✓	✓	✓	✓	✓	✓	✓	-	-	-
Swainson’s Hawk							✓	✓	✓	✓	✓	✓	✓	✓	✓	✓	✓	✓	✓	✓	✓		✓	✓		-	-	-
Red-tailed Hawk			✓				✓	✓	✓	✓	✓	✓	✓	✓	✓	✓	✓	✓	✓	✓	✓	✓	✓	✓	✓	-	-	-
Rough-legged Hawk							✓	✓	✓	✓	✓	✓	✓	✓	✓	✓	✓	✓	✓	✓	✓	✓	✓	✓	✓	-	-	-
Sora																			✓									
Sandhill Crane								✓	✓	✓	✓	✓	✓	✓	✓	✓	✓	✓	✓	✓	✓	✓	✓	✓	✓	-	-	-
Black-bellied Plover											✓			✓												-	-	-
American Golden-Plover							✓			✓	✓		✓		✓	✓	✓				✓		✓		-	-	-	
Semipalmated Plover	✓				✓			✓	✓	✓	✓	✓	✓	✓	✓	✓	✓	✓	✓	✓	✓	✓	✓	✓	✓	-	-	-
Killdeer	✓		✓		✓		✓			✓	✓				✓					✓	✓				-	-	-	
Upland Sandpiper													✓		✓					✓					-	-	-	
Black Turnstone												✓			✓										-	-	-	
Stilt Sandpiper													✓												-	-	-	
Sanderling								✓	✓	✓	✓		✓	✓	✓	✓	✓	✓	✓	✓			✓	✓	-	-	-	
Baird’s Sandpiper							✓	✓	✓		✓				✓		✓							✓	-	-	-	
Least Sandpiper				✓		✓	✓	✓	✓	✓	✓	✓	✓	✓	1	✓	✓	✓	✓	✓	✓	✓	✓	✓	-	1	1	
Pectoral Sandpiper				✓		✓	✓	✓	✓	✓	✓	✓	✓	✓	✓	✓	✓	✓	✓	✓	✓	✓	✓	✓	-	-	-	
Semipalmated Sandpiper								✓	✓	✓	✓	✓			✓	✓		✓			✓		✓		-	-	-	
Western Sandpiper											✓				✓	✓									-	-	-	
Surfbird																		✓							-	-	-	
Short-billed Dowitcher							✓								✓										-	-	-	
Long-billed Dowitcher								✓	✓	✓	✓	✓		✓	✓	✓				✓			✓	✓	-	-	-	
Wilson’s Snipe	✓		✓		✓		1	1	1	✓	✓	✓	✓	1	✓	1	✓	2	✓	✓	2	✓	✓	✓	✓	1	8	9
Red-necked Phalarope									✓	✓	✓	✓	✓	✓	✓	✓	✓	✓	✓	✓	✓	✓	✓	✓	✓	-	-	-
Red Phalarope																✓				✓					-	-	-	
Spotted Sandpiper	1		2		1		1	✓	✓	1	2	✓	1	✓	✓	1	✓	✓	1	✓	1	1	✓	✓	✓	5	8	13
Solitary Sandpiper	✓		✓	2	✓		✓	2	5	1	3	3	2	1	3	✓	✓	✓	1	✓	✓	✓	✓	✓	3	-	26	26
Wandering Tattler											✓														-	-	-	
Greater Yellowlegs			✓		✓		✓		✓		✓							✓				✓			-	-	-	
Lesser Yellowlegs	✓		✓		✓		✓		✓	✓	✓	✓	✓	✓	✓	✓	✓	✓	✓	✓	✓	✓	✓	✓	-	-	-	

SPECIES	2005		2006		2007		2008		2009	2010	2011	2012	2013	2014	2015	2016	2017	2018	2019	2020	2021	2022	2023	2024	2025	SPRING TOTAL	FALL TOTAL	ALL TIME TOTAL
	Spring	Fall	Spring	Fall	Spring	Fall	Spring	Fall	Fall	Fall	Fall	Fall	Fall	Fall	Fall	Fall	Fall	Fall	Fall	Fall	Fall	Fall	Fall	Fall	Fall			
Parasitic Jaeger								✓	✓	✓	✓	✓	✓	✓	✓	✓	✓	✓	✓	✓	✓	✓	✓	✓		-	-	-
Long-tailed Jaeger													✓													-	-	-
Pomarine Jaeger																						✓				-	-	-
Black-legged Kittiwake														✓									✓		✓	-	-	-
Sabine's Gull								✓	✓	✓	✓	✓		✓		✓	✓		✓	✓	✓	✓	✓	✓	✓	-	-	-
Bonaparte's Gull	✓		✓		✓		✓	✓	✓	✓	✓	✓	✓	✓	✓	✓	✓	✓	✓	✓	✓	✓	✓	✓	✓	-	-	-
Little Gull										✓	✓															-	-	-
Mew Gull	✓		✓				✓	✓	✓	✓	✓	✓	✓	✓	✓	✓	✓	✓	✓	✓	✓	✓	✓	✓	✓	-	-	-
Ring-billed Gull																	✓						✓			-	-	-
California Gull											✓	✓					✓									-	-	-
Herring Gull	✓		✓		✓		✓	✓	✓	✓	✓	✓	✓	✓	✓	✓	✓	✓	✓	✓	✓	✓	✓	✓	✓	-	-	-
Thayer's Gull								✓	✓	✓	✓	✓	✓	✓	✓	✓	✓	✓	✓	✓	✓	✓	✓	✓	✓	-	-	-
Iceland Gull																✓				✓						-	-	-
Glaucous-winged Gull											✓	✓														-	-	-
Glaucous Gull								✓	✓	✓	✓	✓	✓	✓	✓	✓	✓	✓	✓	✓				✓		-	-	-
Arctic Tern	✓		✓		✓		✓	✓	✓	✓	✓	✓	✓	✓	✓	✓	✓	✓	✓	✓	✓	✓	✓	✓	✓	-	-	-
Band-tailed Pigeon																										-	-	-
Great Horned Owl								✓	✓	✓	✓			✓	✓	✓	✓		✓	✓			✓	✓	✓	-	-	-
Northern Hawk Owl									✓	✓	✓	✓	✓	✓		✓		✓	✓		✓					-	-	-
Short-eared Owl			✓							✓	✓	✓							✓							-	-	-
Boreal Owl											4			40	✓	5						1	✓			-	50	50
Northern Saw-whet Owl														2												-	2	2
Common Nighthawk								✓	✓	✓	✓		✓	✓	✓		✓		✓	✓	✓	✓			-	-	-	
Pacific Swift											✓															-	-	-
Rufous Hummingbird					✓										✓	✓	✓				✓	✓			✓	-	-	-
Belted Kingfisher	✓		✓	8	✓		✓	8	6	5	6	6	2	9	6	4	3	3	1	6	2	5	1	✓	6	-	87	87
Yellow-bellied Sapsucker	2		2		2		1		✓		3	1	1						✓				1	1	✓	7	7	14
Downy Woodpecker	✓		✓					2	1	3	7			1	1	✓	✓	4	2	1	1	✓	2	✓	2	4	31	35
Hairy Woodpecker	2		✓		✓		✓	✓	✓	✓	✓	✓	✓	✓	✓	✓	✓	2	✓	✓	✓	✓	✓	✓	✓	2	2	4
Three-toed Woodpecker	✓							✓	✓	✓	✓	✓	1	✓	✓	✓	1	1	✓	✓	✓	✓	1	✓		-	4	4
Black-backed Woodpecker								✓	✓	✓	✓	✓	✓	✓	✓		✓	✓	✓	✓	✓	✓	1	✓	✓	-	1	1
Northern Flicker	1		✓		1		✓	✓	✓	1	1	✓	3	✓	✓	3	1	✓	✓	✓	✓	✓	✓	✓	✓	2	9	11
Pileated Woodpecker	✓																									-	-	-
American Kestrel	✓						✓	✓	✓	✓	✓	✓	✓	✓	✓	✓	✓	✓	✓	✓	✓	✓	✓	✓	✓	-	-	-
Merlin					✓		✓	✓	✓	✓	✓	✓	✓	✓	✓	2	2	3	✓	✓	✓	✓	✓	1	✓	-	8	8
Gyr Falcon									✓	✓		✓		✓	✓			✓	✓	✓	✓	✓		✓		-	-	-
Peregrine Falcon					✓		✓	✓	✓	✓	✓	✓	✓	✓	✓	✓	✓	✓	✓	✓	✓	✓	✓	✓	✓	-	-	-
Olive-sided Flycatcher	✓			11	✓		6		✓	✓	1	✓	✓	✓	2	✓	✓	✓		✓	✓	✓	✓	✓	✓	17	3	20
Western Wood-pewee	3		2		2		✓	3	6	5	10	3	4	4	4	✓	1	6	4	✓	2	1	2	5	2	7	62	69

SPECIES	2005		2006		2007		2008		2009	2010	2011	2012	2013	2014	2015	2016	2017	2018	2019	2020	2021	2022	2023	2024	2025	SPRING TOTAL	FALL TOTAL	ALL TIME TOTAL	
	Spring	Fall	Spring	Fall	Spring	Fall	Spring	Fall	Fall	Fall	Fall	Fall	Fall	Fall	Fall	Fall	Fall	Fall	Fall	Fall	Fall	Fall	Fall	Fall	Fall				
Yellow-bellied Flycatcher	2	2	1		1			9	8	11	7	9	11	3	11	16	14	10	12	7	2	2	7	2	3	4	146	150	
Pacific-slope Flycatcher																							3			-	3	3	
Alder Flycatcher	17	9	41	18	10	5	9	811	631	620	637	827	770	506	1058	498	548	358	918	1143	534	286	350	389	377	77	11,651	11,728	
Least Flycatcher	3		4		3		2	2	1	3	10	3	6	2	4	7	2	2	✓	1	1	2				12	46	58	
Hammond's Flycatcher	7		5		11		18	6	12	17	28	7	12	8	21	19	10	20	30	16	3	9	12	7	3	41	240	281	
Dusky Flycatcher	2				2			1	6	3	6	3	3	4	2		4	6	3	3			2			4	46	50	
Western Flycatcher											1				1											-	2	2	
Eastern Phoebe			1																							1	-	1	
Say's Phoebe			2		2		1	1	1	1	✓	✓	✓	✓	2	2	✓	✓	✓	1	✓	✓	✓			5	8	13	
Western Kingbird																	✓									-	-	-	
Northern Shrike	✓								✓	1	1	1	1	1	✓	1	2	1	1	1	1	✓	1	1	✓	-	14	14	
Warbling Vireo	13		1	4	✓		1	9	10	19	17	15	48	12	10	24	19	17	10	15	3	9	21	8	4	15	291	306	
Philadelphia Vireo																		1	1							-	2	2	
Canada Jay	5		✓		1		✓		5	4	✓	✓	✓	1	1	✓	✓	4	4	1	2	✓	4	✓	✓	6	26	32	
Steller's Jay											✓									✓	✓					-	-	-	
Black-billed Magpie					✓		✓	✓	✓	✓	✓	✓	✓	✓	✓	✓	4	1	✓	✓	✓	✓	1	✓	✓	-	6	6	
Clark's Nutcracker																	✓												
Common Raven	✓		✓		✓		✓	✓	1	1	✓	✓	✓	✓	1	✓	✓	✓	✓	✓	✓	1	✓	✓	✓	-	4	4	
Horned Lark			3		✓		✓		✓	✓												✓	✓			3	-	3	
Northern Rough-winged Swallow																✓													
Tree Swallow	5		✓		✓		✓	✓	✓	✓	✓	✓	✓	✓	✓	✓	✓	✓	✓			✓			✓	5	-	5	
Violet-green Swallow	✓		✓		✓		✓	✓		✓	✓	✓			✓	✓	✓	✓	✓		✓		✓	✓		-	-	-	
Bank Swallow	✓		✓				✓	✓	✓	✓	✓	✓	✓	✓	✓	✓	✓	✓	✓	✓	✓	✓	✓	✓	✓	-	-	-	
Barn Swallow	✓		✓		✓			✓	1	✓	✓	✓	✓	✓		✓	✓	✓	✓		✓	✓	✓	✓	✓	-	1	1	
Cliff Swallow	✓		✓		✓		✓	✓	✓	✓	✓	✓	✓	✓	✓	✓	✓	✓	✓	✓	✓	✓		✓	✓	-	-	-	
Black-capped Chickadee	✓	4	4	3	2		2	57	26	22	92	65	31	16	31	24	95	55	110	19	72	4	9	25	40	8	855	863	
Mountain Chickadee							2	15	11		2	1	✓		4		1	2	1	✓	3		1			2	41	43	
Chestnut-backed Chickadee								1			✓															-	1	1	
Boreal Chickadee	2		3		2		8	138	831	✓	233	142	23	3	131	40	473	234	17	25	125	✓	2	20	28	15	2,700	2,715	
Hybrid Chickadee			1					1																		1	1	2	
Red-breasted Nuthatch	✓				✓		1	3	2	2	5	12	6	3	9	3	4	4	5	3	3	✓	1	16	6	1	87	88	
Brown Creeper											✓														✓	2	-	2	2
Winter Wren	1										✓			1							✓				1	1	2	3	
American Dipper														✓											✓	-	-	-	
Golden-crowned Kinglet		1					✓		10	2	1	3	1		2	3	4	7	5	4	1	5	6	3	4	-	62	62	
Ruby-crowned Kinglet	25	7	51	3	27		72	29	175	109	86	134	125	69	284	89	114	150	192	54	121	78	164	148	93	175	2,305	2,480	
Arctic Warbler																								1		-	1	1	
Mountain Bluebird	✓				✓		✓	✓	✓	✓	✓	✓	✓	✓	✓	✓	✓	✓	✓	✓	✓	✓	2	✓		-	2	2	
Townsend's Solitaire								✓	1	✓	1	1	✓	✓	✓	2	✓	✓	✓	✓	✓	2	✓	✓	✓	-	7	7	

SPECIES	2005		2006		2007		2008		2009	2010	2011	2012	2013	2014	2015	2016	2017	2018	2019	2020	2021	2022	2023	2024	2025	SPRING TOTAL	FALL TOTAL	ALL TIME TOTAL
	Spring	Fall	Spring	Fall	Spring	Fall	Spring	Fall	Fall	Fall	Fall	Fall	Fall	Fall	Fall	Fall	Fall	Fall	Fall	Fall	Fall	Fall	Fall	Fall	Fall			
Gray-cheeked Thrush	4	2	2		5		1	1	2	8	2	4	2	10	11	8	4	30	9	4	1	2	3	1	3	12	107	119
Swainson's Thrush	99	7	39	10	48		21	19	49	53	85	41	55	49	68	82	26	102	122	58	18	19	39	60	11	207	973	1,180
Hermit Thrush	1		1		✓		1	1	7	12	12	3	2	1	8	7	2	14	8		2	2	4	4	1	3	90	93
American Robin	27	1	36	5	17		4	✓	27	9	11	✓	4	9	3	✓	1	16	25	8	6	4	5	3	3	84	271	352
Gray Catbird																				1							1	1
Varied Thrush	✓		1		2		✓	3	12	5	2	2	5	3	2	✓	5	5	2	3	1	2	2	2	2	3	58	61
European Starling							✓																			-	-	-
American Pipit	✓		2		✓		1	1	3	✓	2	✓	2	✓	6	2	✓	✓	✓	2	1	1	1	✓	✓	3	21	24
Bohemian Waxwing	✓		40		✓		23	✓	✓	✓	1	✓	✓	✓	✓	✓	✓	✓	✓	✓	✓	✓	✓	✓	✓	63	1	64
Cedar Waxwing									✓	2			8	✓			✓			✓	2	✓	✓	✓	1	-	13	13
Lapland Longspur	✓		✓		✓		5	✓	✓	✓	✓	✓	✓	✓	✓	✓	✓	1	✓	✓	✓	✓	1	✓	1	5	3	8
Smith's Longspur									✓				✓				✓									-	-	-
Snow Bunting										✓	✓	✓	✓	✓			✓	✓	✓	✓		✓	✓	✓		-	-	-
Rustic Bunting																			✓							-	-	-
Northern Waterthrush	4	1	14	10	11		4	46	53	54	42	47	46	48	53	34	34	47	58	45	31	48	53	66	36	33	899	932
Black-and-white Warbler															1				1							-	2	2
Tennessee Warbler	4		4		6		2		9	40	4	1	1	1	8	13	17	16	8	1			19	2	3	16	151	167
Orange-crowned Warbler	16	6	26	1	47		61	101	180	271	57	88	124	149	331	364	176	235	243	55	74	29	117	43	40	150	2,920	3,070
Nashville Warbler								1				1														-	2	2
MacGillivray's Warbler	1		1					1	3	2		1	1													2	8	10
Common Yellowthroat	1		17	4	11	6	21	66	113	70	72	45	65	82	89	57	59	81	146	74	55	32	33	42	63	50	1,335	1,385
American Redstart			6	4	1			10	43	30	39	21	33	25	47	15	23	28	22	19	6	20	30	23	15	7	481	488
Cape May Warbler							1					1														1	1	2
Magnolia Warbler	1							1			✓	1	1				1					1	2		1	1	8	9
Blackburnian Warbler															1											-	1	1
Yellow Warbler	10	6	50	19	37	3	31	486	325	471	310	225	333	504	556	449	163	266	655	404	154	77	153	176	103	128	6,027	6,155
Blackpoll Warbler	3	2	21	4	10		5	47	107	194	58	87	87	61	99	134	71	95	96	35	23	27	41	34	49	39	1,446	1,485
Yellow-rumped Warbler							1	1																✓		1	1	2
Yellow-rumped Warbler (Myrtle)	60	3	63	5	29		78	49	284	673	142	195	163	178	311	286	654	478	379	138	160	173	177	143	163	230	5,232	5,462
Yellow-rumped Warbler (Audubon's)									✓	1																-	1	1
Townsend's Warbler			✓				1	✓	8	10	6	6	7	10	2	2	16	10	8	9	5	1	9	2	5	1	116	117
Wilson's Warbler	116	8	54	5	63		151	113	161	177	133	134	122	164	386	172	68	164	245	81	101	71	162	91	90	384	2,788	3,172
American-tree Sparrow	220		13	1	72		41	19	54	21	77	17	19	22	137	20	27	88	45	5	42	2	37	11	11	346	743	1089
Chipping Sparrow	28		4	1	6		3	6	24	18	28	17	20	15	29	31	38	18	50	34	1	4	21	6	11	41	373	455
Brewer's Sparrow				1					1		2						1	3	1							-	9	9
Fox Sparrow	106		3		17		26	11	28	28	17	6	7	17	42	10	13	99	15	3	12	2	14	12	15	152	351	503
Dark-eyed Junco					9		31	11	✓	✓	✓	✓			2											40	13	53
Dark-eyed Junco (Slate-colored)	165	12	139	5	135		224	182	582	420	331	116	341	140	209	229	443	348	384	139	213	188	270	207	214	663	5,323	5,986
White-crowned Sparrow	86	3	13		579		311	1	33	36	34	22	16	15	23	15	20	31	24	15	18	5	61	21	16	989	441	1,430

SPECIES	2005		2006		2007		2008		2009	2010	2011	2012	2013	2014	2015	2016	2017	2018	2019	2020	2021	2022	2023	2024	2025	SPRING TOTAL	FALL TOTAL	ALL TIME TOTAL
	Spring	Fall	Spring	Fall	Spring	Fall	Spring	Fall	Fall	Fall	Fall	Fall	Fall	Fall	Fall	Fall	Fall	Fall	Fall	Fall	Fall	Fall	Fall	Fall	Fall			
Golden-crowned Sparrow	1				16		9						1	1	2			✓		1		1	3			26	9	35
White-throated Sparrow			✓		1													1								1	1	2
Savannah Sparrow	11	2	2	2	24		10	14	18	18	23	25	18	17	55	17	12	25	48	16	14	10	16	3	9	47	362	409
Song Sparrow										1						1			1							-	3	3
Lincoln's Sparrow	9	1	6		39		21	5	16	15	27	9	9	9	65	13	14	54	39	11	19	3	35	11	14	75	423	498
Swamp Sparrow										1									2							-	3	3
Western Tanager			1						1		✓	✓						✓								1	1	2
Red-winged Blackbird	✓		1		1		✓		✓		✓	✓	✓			✓		✓	✓	✓			✓		✓	2	-	2
Rusty Blackbird	19		3		2	1	✓	11	30	20	16	9	14	10	18	6	14	3	17	1	12	1	11	9	12	24	215	239
Brown-headed Cowbird	1		✓		✓		✓			✓	1		✓	2	1			✓								1	4	5
Pine Grosbeak			2					✓	✓	✓	✓	✓	✓	✓	✓	✓	✓	✓	✓	✓	✓	✓	1	✓	✓	2	1	3
Purple Finch	27		3		6		1	✓	✓	10	1	2	1	3	✓	✓	✓	3	1	2	✓	✓	✓	✓	1	37	24	61
Red Crossbill	3						✓	✓	✓	✓	✓	✓	✓	✓	✓	✓	✓			✓	✓	✓		✓	✓	3	-	3
White-winged Crossbill			5					2	2	100	1	2	5	2	✓	46	✓	✓	62	✓	3	14	✓	24	4	5	267	272
Common Redpoll	✓		107		1		22	✓	6	1	75	47	✓	1	8	3	2	4	3	1	1	✓	2	✓	3	130	157	287
Hoary Redpoll					3						2			✓					1							3	3	6
Pine Siskin	28		1				✓	1	1	91	10	3	8	303	1	3	151	2	87	4	✓	3	7	15	1	29	691	720
Evening Grosbeak														✓												-	-	-
<b>TOTAL SPECIES BANDED</b>	<b>43</b>	<b>18</b>	<b>48</b>	<b>21</b>	<b>43</b>	<b>4</b>	<b>45</b>	<b>48</b>	<b>53</b>	<b>52</b>	<b>57</b>	<b>51</b>	<b>51</b>	<b>48</b>	<b>51</b>	<b>51</b>	<b>47</b>	<b>52</b>	<b>55</b>	<b>44</b>	<b>45</b>	<b>41</b>	<b>54</b>	<b>40</b>	<b>46</b>	<b>70</b>	<b>92</b>	<b>101</b>
<b>TOTAL BIRDS BANDED</b>	<b>1142</b>	<b>77</b>	<b>814</b>	<b>115</b>	<b>1267</b>	<b>15</b>	<b>1238</b>	<b>2319</b>	<b>3956</b>	<b>3706</b>	<b>2793</b>	<b>2429</b>	<b>2,577</b>	<b>2,510</b>	<b>4,186</b>	<b>2,780</b>	<b>3,369</b>	<b>3,167</b>	<b>4,138</b>	<b>2,471</b>	<b>1,865</b>	<b>1156</b>	<b>1937</b>	<b>1643</b>	<b>1481</b>	<b>4,461</b>	<b>51,437</b>	<b>55,898</b>

## **Appendix B – Daily Species Total Summary**

Species	First Date	ALL OBS		Last Date	HIGH COUNT	
		# of Days	Bird Days		#	Date
Greater White-fronted Goose	15-Aug	12	911	29-Sep	645	31-Jul
Snow Goose	25-Sep	8	4991	20-Oct	4742	29-Sep
Canada Goose	30-Jul	27	754	14-Oct	105	28-Sep
Unidentified Goose	25-Aug	3	73	18-Sep	63	30-Aug
Trumpeter Swan	19-Sep	17	596	20-Oct	190	17-Oct
Tundra Swan	19-Sep	17	2518	19-Oct	1061	10-Oct
Unidentified Swan	18-Sep	18	486	19-Oct	330	10-Oct
Mallard	30-Jul	34	390	16-Oct	122	3-Oct
American Wigeon	6-Aug	11	148	3-Oct	54	22-Aug
Blue-winged Teal	19-Aug	1	1	19-Aug	1	N/A
Northern Shoveler	2-Aug	7	30	10-Oct	15	3-Oct
Northern Pintail	11-Aug	14	288	3-Oct	187	3-Oct
Green-winged Teal	1-Aug	12	49	3-Oct	12	26-Sep
Unidentified Dabbling	8-Sep	2	18	4-Oct	12	4-Oct
Canvasback	18-Sep	7	87	13-Oct	18	20-Sep
Ring-necked Duck	4-Sep	7	66	9-Oct	30	4-Oct
Greater Scaup	30-Aug	9	35	13-Oct	8	20-Sep
Lesser Scaup	4-Sep	21	579	13-Oct	102	24-Sep
Surf Scoter	31-Jul	22	181	5-Oct	68	25-Sep
White-winged Scoter	8-Sep	7	110	12-Oct	97	25-Sep
Unidentified Scoter	19-Sep	1	8	19-Sep	8	19-Sep
Harlequin Duck	29-Aug	1	1	29-Aug	1	N/A
Long-tailed Duck	20-Oct	1	14	20-Oct	14	20-Oct
Barrow's Goldeneye	5-Aug	6	13	8-Oct	5	5-Aug
Common Goldeneye	11-Oct	8	65	20-Oct	18	13-Oct
Unidentified Goldeneye	4-Oct	2	41	10-Oct	31	4-Oct
Bufflehead	5-Oct	2	8	12-Oct	7	12-Oct
Common Merganser	11-Aug	52	1395	20-Oct	208	6-Sep
Red-breasted Merganser	30-Jul	43	351	20-Oct	33	5-Sep

Species	First Date	ALL OBS		Last Date	HIGH COUNT	
		# of Days	Bird Days		#	Date
Unidentified Duck	22-Aug	4	14	12-Oct	5	5-Sep, 8-Oct
Spruce Grouse	2-Aug	2	2	26-Sep	1	2-Aug, 26-Sep
Ruffed Grouse	15-Aug	41	115	19-Oct	11	29-Aug
Red-throated Loon	30-Jul	38	80	17-Oct	6	2-Sep
Pacific Loon	30-Jul	37	109	13-Oct	33	24-Sep
Common Loon	30-Jul	48	257	1-Oct	16	11-Sep
Yellow-billed Loon	17-Oct	2	2	18-Oct	1	All Days
Unidentified Loon	30-Aug	7	11	20-Oct	4	25-Sep
Horned Grebe	31-Jul	15	23	17-Oct	3	31-Jul, 1-Oct
Red-necked Grebe	30-Jul	62	205	20-Oct	26	29-Aug
Osprey	13-Aug	17	39	30-Sep	6	27/28-Sep
Golden Eagle	13-Aug	21	66	19-Oct	17	10-Oct
Bald Eagle	30-Jul	49	109	20-Oct	10	10-Oct
Northern Harrier	25-Aug	39	178	18-Oct	16	18-Oct
Sharp-shinned Hawk	11-Aug	44	160	19-Oct	28	28-Sep
Northern Goshawk	5-Sep	17	21	14-Oct	3	30-Sep
Red-tailed Hawk (Harlan's)	2-Aug	28	136	16-Oct	24	28-Sep
Rough-legged Hawk	24-Sep	12	45	19-Oct	13	18-Oct
Unidentified Buteo	30-Sep	3	3	10-Oct	1	All Days
Unidentified Raptor	30-Sep	1	1	30-Sep	1	N/A
Sandhill Crane	6-Sep	4	28	10-Oct	22	6-Sep
Semipalmated Plover	7-Aug	3	3	26-Aug	1	All days
Least Sandpiper	30-Jul	4	4	27-Aug	1	All days
Unidentified Peep	6-Aug	2	2	1-Sep	1	All days
Wilson's Snipe	14-Aug	11	11	2-Oct	1	All Days
Red-necked Phalarope	25-Aug	1	9	25-Aug	9	N/A
Spotted Sandpiper	30-Jul	31	59	26-Sep	6	2/23-Aug
Solitary Sandpiper	30-Jul	9	12	16-Aug	2	6/8/11-Aug
Lesser Yellowlegs	5-Aug	1	1	5-Aug	1	N/A

Species	First Date	ALL OBS		Last Date	HIGH COUNT	
		# of Days	Bird Days		#	Date
Unidentified Shorebird	12-Sep	1	1	12-Sep	1	N/A
Parasitic Jaeger	8-Sep	1	2	8-Sep	2	N/A
Bonaparte's Gull	30-Jul	5	47	21-Aug	18	2-Aug
Sabine's Gull	17-Sep	7	13	3-Oct	3	17/18-Sep
Unidentified Jaeger	29-Sep	1	1	29-Sep	1	N/A
American Herring Gull	30-Jul	58	679	17-Oct	70	2-Aug
Short-billed Gull	30-Jul	34	141	19-Sep	62	2-Aug
Thayer's Gull	30-Aug	30	217	18-Oct	46	19-Sep
Black-legged Kittiwake	17-Oct	1	1	17-Oct	1	17-Oct
Arctic Tern	31-Jul	5	13	1-Sep	5	2-Aug
Unidentified Gull	21-Aug	11	92	10-Oct	62	19-Sep
Great Horned Owl	13-Aug	2	2	22-Aug	1	All days
Belted Kingfisher	30-Jul	35	56	17-Oct	3	16/19/25-Sep
Yellow-bellied Sapsucker	31-Jul	2	3	5-Aug	2	31-Jul
Downy Woodpecker	31-Jul	4	4	29-Sep	1	31-Jul, 7-Aug, 8/29-Sep
Hairy Woodpecker	8-Oct	2	2	18-Oct	1	All days
Black-backed Woodpecker	8-Sep	1	1	8-Sep	1	N/A
Northern Flicker	29-Aug	3	3	9-Sep	1	All days
Unidentified Woodpecker	4-Sep	1	1	4-Sep	1	N/A
American Kestrel	20-Aug	21	92	10-Oct	26	27-Sep
Merlin	2-Aug	24	36	19-Oct	5	30-Aug
Peregrine Falcon	30-Aug	7	11	28-Sep	3	19-Sep
Olive-sided Flycatcher	23-Aug	2	2	26-Sep	1	All days
Western Wood-Pewee	13-Aug	6	7	25-Sep	2	25-Sep
Yellow-bellied Flycatcher	7-Aug	3	3	19-Aug	1	All Days
Alder Flycatcher	30-Jul	37	400	25-Sep	52	20-Aug
Hammond's Flycatcher	31-Jul	4	5	28-Aug	2	31-Jul
Unidentified Flycatcher	13-Aug	3	3	19-Sep	1	All Days

Species	First Date	ALL OBS		Last Date	HIGH COUNT	
		# of Days	Bird Days		#	Date
Northern Shrike	30-Sep	1	1	30-Sep	1	N/A
Warbling Vireo	2-Aug	7	7	25-Aug	1	All Days
Black-billed Magpie	4-Sep	32	36	20-Oct	2	4/12/21/23-Sep
Canada Jay	13-Oct	4	4	18-Oct	1	All days
Common Raven	30-Jul	72	227	20-Oct	16	10-Oct
American Crow	24-Aug	2	11	9-Sep	6	9-Sep
Tree Swallow	7-Aug	1	3	7-Aug	3	7-Aug
Bank Swallow	2-Aug	4	113	22-Aug	74	19-Aug
Cliff Swallow	2-Aug	5	7	21-Sep	3	13-Aug
Barn Swallow	31-Jul	4	8	19-Aug	4	15-Aug
Unidentified Swallow	6-Aug	3	15	19-Aug	10	6-Aug
Black-capped Chickadee	30-Jul	50	143	17-Oct	12	13-Sep
Boreal Chickadee	30-Jul	31	91	11-Oct	12	28-Sep
Red-breasted Nuthatch	30-Jul	24	32	14-Sep	3	14-Aug
Brown Creeper	16-Aug	2	2	23-Sep	1	All days
Golden-crowned Kinglet	14-Aug	4	5	24-Sep	2	9-Sep
Ruby-crowned Kinglet	31-Jul	41	123	17-Oct	17	21-Sep
Pacific Wren	1-Sep	1	1	1-Sep	1	N/A
Rufous Hummingbird	30-Jul	1	1	30-Jul	1	30-Jul
Townsend's Solitaire	24-Aug	15	63	28-Sep	19	21-Sep
Gray-cheeked Thrush	24-Aug	3	3	8-Sep	1	All days
Swainson's Thrush	1-Aug	19	30	7-Sep	4	13-Aug
Hermit Thrush	30-Sep	1	1	30-Sep	1	N/A
American Robin	31-Jul	32	2137	11-Oct	610	27-Sep
Varied Thrush	20-Aug	24	735	30-Sep	292	21-Sep
Unidentified Large Thrush	3-Sep	14	1033	30-Sep	364	21-Sep
American Pipit	23-Aug	31	541	8-Oct	262	27-Sep
Bohemian Waxwing	15-Aug	5	71	19-Oct	45	19-Oct
Cedar Waxwing	30-Jul	1	1	30-Jul	1	N/A

Species	First Date	ALL OBS		Last Date	HIGH COUNT	
		# of Days	Bird Days		#	Date
Lapland Longspur	28-Aug	17	53	30-Sep	25	29-Sep
Northern Waterthrush	30-Jul	30	64	11-Sep	5	7-Aug
Tennessee Warbler	2-Aug	3	3	25-Aug	1	2/7/25-Aug
Orange-crowned Warbler	15-Aug	24	48	29-Sep	6	25-Aug
Common Yellowthroat	31-Jul	29	73	25-Sep	8	3-Sep
American Redstart	30-Jul	19	36	23-Sep	5	30-Jul
Northern Yellow Warbler	30-Jul	37	158	16-Sep	15	5-Aug
Magnolia Warbler	16-Aug	1	1	16-Aug	1	N/A
Blackpoll Warbler	1-Aug	31	103	15-Sep	12	13-Aug
Yellow-rumped Warbler (Myrtle)	30-Jul	61	1293	9-Oct	392	21-Sep
Townsend's Warbler	31-Jul	5	7	28-Aug	2	31-Jul, 24-Aug
Wilson's Warbler	5-Aug	41	93	5-Oct	6	2-Sep
Unidentified Warbler	7-Aug	23	133	16-Sep	18	20-Aug
American Tree Sparrow	5-Sep	16	27	15-Oct	4	4-Oct
Chipping Sparrow	30-Jul	14	20	18-Sep	3	30-Jul
Fox Sparrow	13-Aug	12	16	1-Oct	3	8-Sep
Dark-eyed Junco (Slate-colored)	30-Jul	53	334	9-Oct	27	7-Sep
White-crowned Sparrow	20-Aug	18	26	3-Oct	4	24-Aug
Savannah Sparrow	6-Aug	23	47	4-Oct	5	24-Aug
Lincoln's Sparrow	13-Aug	13	16	29-Sep	3	27-Aug
Unidentified Sparrow	3-Sep	5	5	27-Sep	1	All Days
Red-winged Blackbird	3-Aug	1	1	3-Aug	1	3-Aug
Rusty Blackbird	30-Jul	36	120	20-Oct	17	27-Sep
Unidentified blackbird	7-Sep	1	1	7-Sep	1	N/A
Pine Grosbeak	25-Sep	10	123	20-Oct	54	18-Oct
Purple Finch	30-Jul	5	5	21-Sep	1	All day
White-winged Crossbill	30-Jul	51	573	18-Oct	80	5-Oct
Red Crossbill	30-Jul	1	6	30-Jul	6	30-Jul
Redpoll	1-Aug	17	1760	20-Oct	978	18-Oct

Species	First Date	ALL OBS		Last Date	HIGH COUNT	
		# of Days	Bird Days		#	Date
Pine Siskin	30-Jul	30	366	12-Oct	72	21-Sep
Unidentified Finch	7-Aug	15	339	16-Oct	117	4-Oct
Unidentified Passerine	2-Aug	39	1626	19-Oct	553	21-Sep